

GUIDE

The World's First AutoFocus Thermal Imager for Smartphone

MobIR 2 Thermal Camera for Smartphone

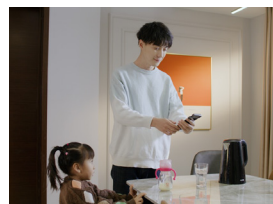
Introduction

MobIR 2 series is a new generation of infrared thermal imager for smartphone launched by Guide. Built-in the world's first autofocus WLP infrared module, with higher resolution and performance comparable to professional thermal imaging cameras. This product allows you to see things that you can't see with the naked eye, It can realize real-time temperature measurement, night vision, photography, video and other functions through the mobile phone APP.

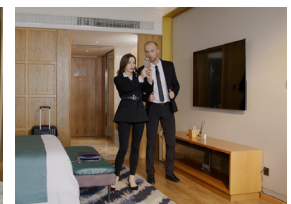
Features

- 256x192 resolution, Autofocus, Clearly no matter near or far
- Type-C interface, Battery-free design, plug and play
- $\pm 2^{\circ}\text{C}$ industrial-grade temperature measurement accuracy
- Outdoor night vision recognition range is more than 100 meters
- Multifunctions, complete APP functions, share at any time

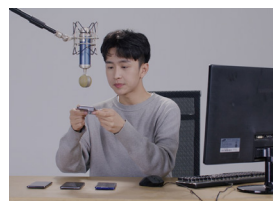
Applications



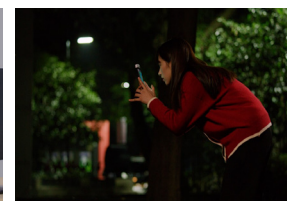
House Inspection



Privacy Protection



Evaluation tool

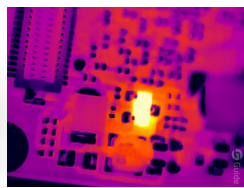


Outdoor Night Vision

Specifications



| Product model | MobIR 2T | MobIR 2S | MobIR 2S (Macro Lens) |
|---------------------------------|--|-----------------------------------|---|
| Infrared detector | | | |
| Detector type | VOx | | |
| Infrared resolution | 256 × 192@12 μm | | |
| Wavelength range | 7.5 to 14 μm | | |
| Frame rate | 25 Hz | | |
| Lens | | | |
| Focal length | 3.2 mm | 7 mm | |
| Field of view | 56° | 25° | |
| Focusing mode | Automatic / Electric | | |
| Temperature measurement | | | |
| Measurement range | Industrial measurement: -20°C to 150°C; Human body: 20°C to 50°C | -20°C to 150°C | |
| Measurement accuracy | Industrial measurement range: ±2°C or ±2%, whichever is greater; Human body: ±0.5°C (Temperature Measurement Distance: 0.5-2.5m) | ±2°C or ±2%, whichever is greater | |
| Measurement | Spot, line, area | | |
| Macro function | / | | Available* |
| APP Functions | | | |
| Photo | Available | | |
| Video | Available | | |
| Color palettes | 9 and 1 customized | | |
| Instant sharing | Images, videos | | |
| Power system | | | |
| Power supply | 4.5 - 5.5 V | | |
| Power consumption | 500 mW | | |
| Environmental parameters | | | |
| Working temperature | -10°C to 60°C | | |
| IP rating | IP43 | | |
| Drop | 1m drop test (without the type-c interface) | | |
| Certification | CE, FCC, RoHS | | |
| Physical parameters | | | |
| External interface | USB Type-C male | | |
| Weight | ≤ 35 g | ≤ 40 g | ≤ 50 g |
| Size (L × W × H) | 59 × 24 × 16 mm | 59 × 24 × 20 mm | |
| Color | Silver/Grey | | |
| Standard | A device, Carrying box, Wrist strap, User manual, Certificate of approval | | A device, Carrying box, Wrist strap, User manual, Certificate of approval, Macro Lens |



| *MobIR 2S Macro function | | | | |
|--------------------------|------------|-------------|------------|-------------|
| Magnification | 5X | | 10X | |
| Observed altitude(mm) | 48.75 | 93.16 | 40.23 | 72.71 |
| Visual range(mm) | 20.26×15.2 | 38.33×28.75 | 15.87×11.9 | 29.95×22.46 |