

**APEX
VISION**

Thermal

**Easy, Efficient,
Extraordinary**

EasIR Series Tool-like Thermal camera

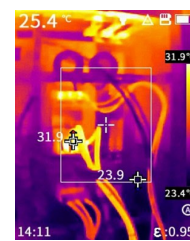
Introduction

EasIR Series tool-like thermal camera provides two configuration options of 120x90 and 256x192 IR detectors. It adopts the new real-time IR-Perfclear technology to enhance the details and reduce noise of the image and present a clearer image in real time. Equipped with a series of professional functions such as 2MP visible light camera, video streaming and recording, WIFI, and OTA upgrade, etc., EasIR Series brings a clearer, more powerful and smoother work experience for users.

Features

- Next-gen infrared imaging system APEXVISION for ultra-clarity & precision
- High-sensitive infrared detector, resolution 120x90/256x192
- Real-time IR-Perfclear technology, 4 times better image quality
- -20°C~550°C wide temperature measurement range, automatic switch
- Photo and video recording, convenient sharing via mobile APP
- Video streaming, real-time data transmission with PC analysis software
- OTA firmware upgrade to keep the device up-to-date

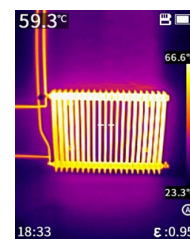
Applications



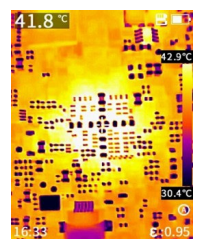
Electrical Application



Facilities maintenance



HVAC Inspection



PCBA detection

Specifications

Product model	E1S	E1+S	E2S	E2+S
Imaging and optics				
Core technology	Equipped with full ApexVision S1 system architecture: Detector ApexCore S1 + Platform Nexus 1.0 + Algorithm SharpIR 2.0			
Detector type	VOx, 7.5 to 14μm			
Infrared resolution	120×90@12μm		256×192@12μm	
Super resolution	Support real-time super-resolution reconstruction, upgrade to 240×180		Support real-time super-resolution reconstruction, upgrade to 512×384	
NETD	15mK			
Frame rate	25Hz/9Hz			
Focal length	1.6mm		3.2mm	7mm
Field of view	50°×38°		56°×42°	25°×19°
IFOV	7.27mrad		3.82mrad	1.71mrad
Min. object distance	0.1m			
D:S	138:1		262:1	585:1
Focusing mode	Focus-free			Automatic
Measurement and analysis				
Measurement range	Support auto-switching: -20°C to 150°C, 0°C to 550°C			
Measurement accuracy	±2°C or ±2%, whichever is greater			
Analyzed target	Center spot; Three Fixed Areas: Small, Medium, Large (Alternative)			
Alarm	Full screen temperature threshold alarm (Image and Flash)			
Image display				
Display screen	2.4" LCD			
Image mode	IR, VIS, MIF, PIP			IR, VIS, MIF and PIP
Color palettes	6: Iron Red, White Hot, Arctic, Rainbow 2, Hot Iron, Rainbow 1			
Image adjustment	Level span mode: Automatic, Semi-automatic, Manual			
Digital camera	2MP			
Functions				
Laser	Laser Indication			
Recording function	Photo and Video			
Storage and transmission				
Storage media	Built-in (16 GB)			
Image storage	JPG with temp info			
Video storage	Video storage format in Irgd (with temp info)	Supports real-time video streaming, video storage format in Irgd (with temp info)		
External interface	USB-C, Tripod socket			
Wi-Fi	/	Yes, it can be connected to the mobile terminal for image and real-time video transmission		
Power system				
Battery type	Rechargeable lithium-ion battery, non-removable			
Operating time	8 hours		11 hours	
Environmental parameters				
Working temperature	-15°C to 50°C			
IP rating	IP54			
Drop	2m drop test			
Physical parameters				
Hardware	Illuminator		Wi-Fi, Illuminator	
Weight	355g		375g	
Size	194×61.5×76mm			
Software kit	PC: ThermoTools		PC: ThermoTools; Mobile: FocusIR (iOS/Android)	
Standard	A device, Wrist strap, Power adapter, Adapter plug, USB-A to USB-C cable, Quick Start Guide, Warranty card			
Options	Tripod			

* Product performance is based on testing in a controlled laboratory environment. Your test results may vary due to several external and environmental factors. All specifications are subject to the actual product. The manufacturer reserves the right to modify technical specifications without notice or liability to you.